



January 12, 2024

[www.enervantage.com](http://www.enervantage.com)

Phone: 502-963-8230

### Physical Spot Prices – January 11, 2024

	Price	Change	Natural Gas Equivalent
Natural Gas – H. Hub	\$3.097/MMBtu	+\$0.276	\$3.097
Propane – Mont Belvieu	\$0.7627/gal	+\$0.077	\$8.34
Crude Oil – WTI Cush	\$71.37/bbl	-\$1.330	\$12.31
No.2 Heating Oil – NYH	\$98.10/bbl	-\$5.930	\$16.84
No.6 Resid. – G. Coast	\$63.60/bbl	-\$9.380	\$10.12
Cent App Coal (prev. day)	\$72.40/ton	+\$0.150	\$2.90

Change is from previous week

### U.S. Rotary Rig Count for:

	Gas	Oil
Week ending 01-05-24		
Current	118	501
Last Week	120	500
Last Year	152	618

Market Update is a weekly publication of EnerVantage and is designed to provide industrial and commercial customers with the latest "Market News" in the natural gas industry. The information contained herein is intended as general business information. This publication contains forward-looking material and is not intended for a specific business situation. If you would like copies of previous reports, please visit our website or contact your Sales Manager.

### Futures Pricing

At the close of business Thursday, January 11, 2024 the future strip prices were as follows:

	This Week 01/11/24	Last Week 01/04/24	Change	Last Month 12/11/23	Change	Last Year 1/11/23	Change
NYMEX near month	\$3.097	\$2.821	+\$0.276	\$2.350	+\$0.747	\$4.570	-\$1.473
NYMEX 12-month strip	\$3.008	\$2.952	+\$0.057	\$2.663	+\$0.345	\$4.029	-\$1.021
NYMEX Winter strip	\$3.692	\$3.621	+\$0.071	\$3.377	+\$0.315	\$4.565	-\$0.873
NYMEX Summer strip	\$2.768	\$2.744	+\$0.024	\$2.477	+\$0.291	\$3.704	-\$0.936

Near month range for the week = \$2.681 - \$3.392

Current near month is February '24

12-month strip is February '24 – January '25

Summer strip is Apr '24 – Oct '24

Winter strip is Nov '24 – Mar '25

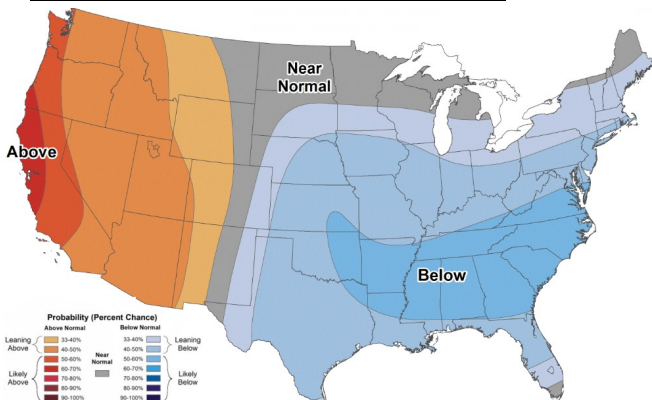
### Near-Month Natural Gas

#### Futures Prices (NYMEX) through Jan 11, 2024



### Temperature Forecast

#### January 19 through January 25, 2024



For more information on anything addressed in this report, please contact your Sales Manager.

Sources: NOAA, EIA, CME Group and Baker Hughes

### Storage Report

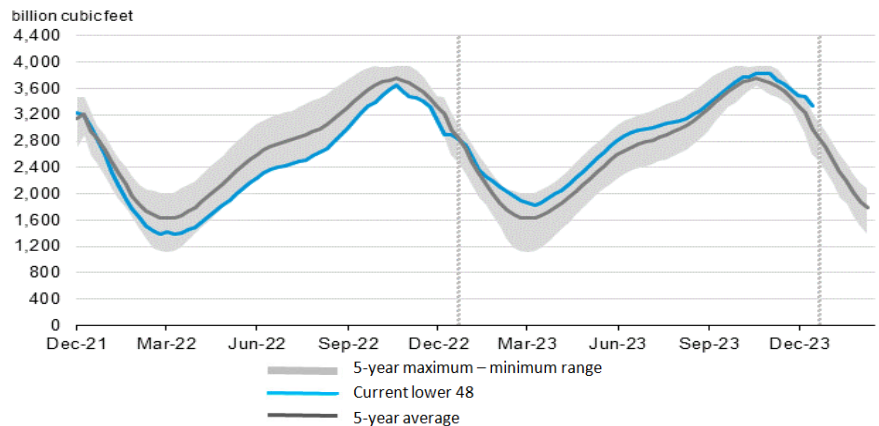
For the week ending January 05, 2023, natural gas storage reported by the Energy Information Administration (EIA) was (in Bcf):

This Week	Last Week	Last Year	5 Yr. Ave.
3,336	3,476	2,900	2,988

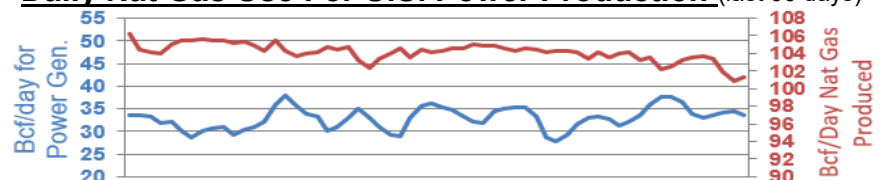
Change this week: -140 Change for the same week last year: +11 Bcf

Inventory vs. 1 Year ago: +15.0% Inventory vs. 5-Yr. Ave: +11.6%

### Working Gas in Storage Compared to 5-Year Range



### Daily Nat Gas Use For U.S. Power Production (last 60 days)



Last 52 week Average = 35.4 Bcf/day

Last 30 day Average = 33.4 Bcf/day

% of U.S. Demand = 41%

% of U.S. Demand = 32%