



January 13, 2023

www.enervantage.com

Phone: 502-963-8230

Physical Spot Prices – January 12, 2023

	Price	Change	Natural Gas Equivalent
Natural Gas – H. Hub	\$3.695/MMBtu	-\$0.025	\$3.695
Propane – Mont Belvieu	\$0.7924/gal	+\$0.061	\$8.66
Crude Oil – WTI Cush	\$77.410/bl	+\$4.570	\$13.35
No.2 Heating Oil – NYH	\$107.75/bl	+\$10.340	\$18.50
No.6 Resid. – G. Coast	\$55.070/bl	+\$4.580	\$8.76
Cent App Coal (prev. day)	\$140.00/ton	-\$5.000	\$5.60

Change is from previous week

U.S. Rotary Rig Count for:

	Gas	Oil
Week ending 01-06-23		
Current	152	618
Last Week	156	621
Last Year	107	481

Market Update is a weekly publication of EnerVantage and is designed to provide industrial and commercial customers with the latest "Market News" in the natural gas industry. The information contained herein is intended as general business information. This publication contains forward-looking material and is not intended for a specific business situation. If you would like copies of previous reports, please visit our website or contact your Sales Manager.

Futures Pricing

At the close of business Thursday, January 12, 2023 the future strip prices were as follows:

	This Week 01/12/23	Last Week 01/05/23	Change	Last Month 12/12/22	Change	Last Year 01/12/22	Change
NYMEX near month	\$3.695	\$3.720	-\$0.025	\$6.416	-\$2.721	\$4.414	-\$0.719
NYMEX 12-month strip	\$3.765	\$3.804	-\$0.039	\$5.443	-\$1.678	\$3.519	+\$0.246
NYMEX Winter strip	\$4.405	\$4.416	-\$0.011	\$5.580	-\$1.175	\$3.545	+\$0.860
NYMEX Summer strip	\$3.545	\$3.584	-\$0.039	\$5.137	-\$1.592	\$3.288	+\$0.257

Near month range for the week = \$3.422 - \$4.128

Current near month is February '23

Summer strip is Apr '23 – Oct '23

12-month strip is February '23 – January '24

Winter strip is Nov '23 – Mar '24

Near-Month Natural Gas

Futures Prices (NYMEX) through January 12



Storage Report

For the week ending January 06, 2023, natural gas storage reported by the Energy Information Administration (EIA) was (in Bcf):

This Week	Last Week	Last Year	5 Yr. Ave.
2,902	2,891	3,042	2,942

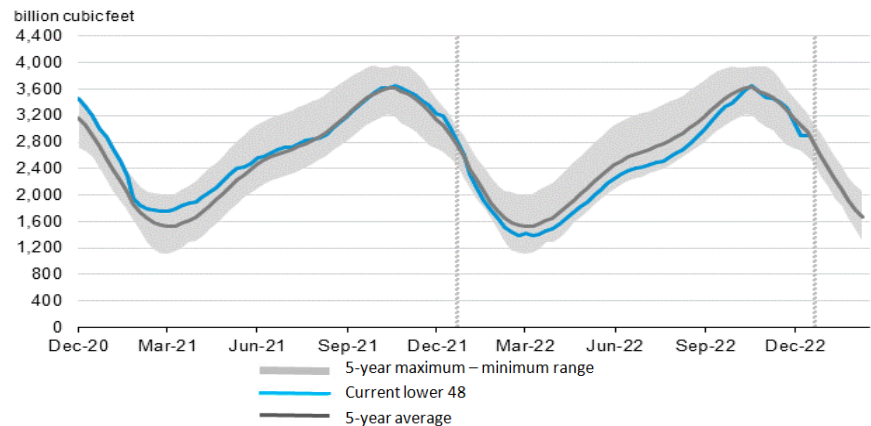
Change this week: +11 Bcf

Change for the same week last year: -157 Bcf

Inventory vs. 1 Year ago: -4.6%

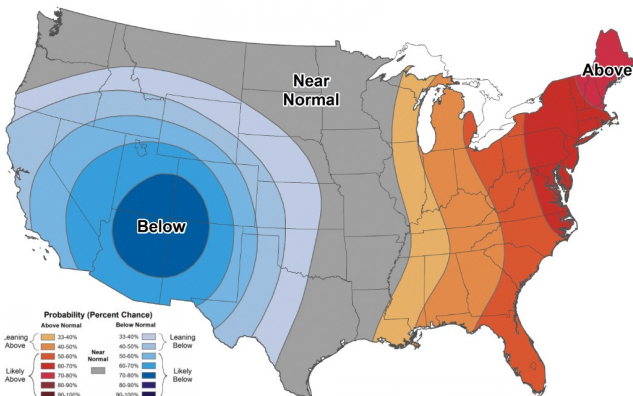
Inventory vs. 5-Yr. Ave: -1.4%

Working Gas in Storage Compared to 5-Year Range



Temperature Forecast

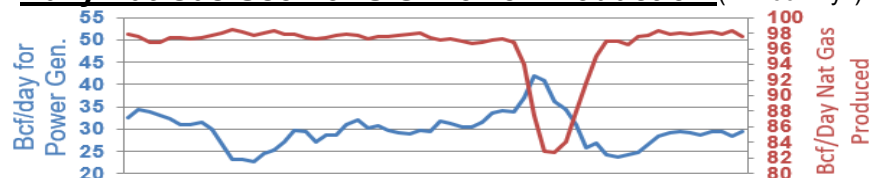
Jan 20 through Jan 26, 2023



For more information on anything addressed in this report, please contact your Sales Manager.

Sources: NOAA, EIA, CME Group and Baker Hughes

Daily Nat Gas Use For U.S. Power Production (last 60 days)



Last 52 week Average = 32.8 Bcf/day

Last 30 day Average = 30.6 Bcf/day

% of U.S. Demand = 39%

% of U.S. Demand = 29%