



February 16, 2024

www.enervantage.com

Phone: 502-963-8230

Physical Spot Prices – February 15, 2024

	Price	Change	Natural Gas Equivalent
Natural Gas – H. Hub	\$1.581/MMBtu	-\$0.336	\$1.581
Propane – Mont Belvieu	\$0.9254/gal	+\$0.0203	\$10.11
Crude Oil – WTI Cush	\$76.64/bbl	+\$2.780	\$13.21
No.2 Heating Oil – NYH	\$96.92/bbl	-\$0.210	\$16.64
No.6 Resid. – G. Coast	\$63.06/bbl	-\$0.940	\$10.03
Cent App Coal (prev. day)	\$70.50/ton	-\$0.900	\$2.82

Change is from previous week

U.S. Rotary Rig Count for:

	Gas	Oil
Week ending 02-09-24		
Current	121	499
Last Week	117	499
Last Year	150	609

Market Update is a weekly publication of EnerVantage and is designed to provide industrial and commercial customers with the latest "Market News" in the natural gas industry. The information contained herein is intended as general business information. This publication contains forward-looking material and is not intended for a specific business situation. If you would like copies of previous reports, please visit our website or contact your Sales Manager.

Futures Pricing

At the close of business Thursday, February 15, 2024 the future strip prices were as follows:

	This Week 02/15/24	Last Week 02/08/24	Change	Last Month 01/16/24	Change	Last Year 02/15/23	Change
NYMEX near month	\$1.581	\$1.917	-\$0.336	\$2.477	-\$0.896	\$3.640	-\$2.059
NYMEX 12-month strip	\$2.401	\$2.632	-\$0.231	\$3.017	-\$0.616	\$3.677	-\$1.276
NYMEX Winter strip	\$3.195	\$3.371	-\$0.176	\$3.657	-\$0.462	\$4.168	-\$0.973
NYMEX Summer strip	\$2.043	\$2.289	-\$0.246	\$2.698	-\$0.655	\$3.367	-\$1.324

Near month range for the week = \$1.573 - \$1.885

Current near month is March '24

12-month strip is March '24 – February '25

Summer strip is Apr '24 – Oct '24

Winter strip is Nov '24 – Mar '25

Near-Month Natural Gas

Futures Prices (NYMEX) through Feb 15, 2024



Storage Report

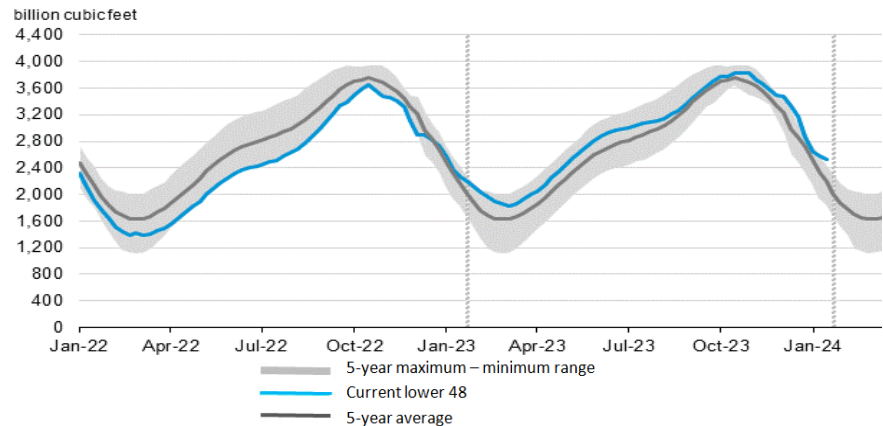
For the week ending February 09, 2024, natural gas storage reported by the Energy Information Administration (EIA) was (in Bcf):

This Week	Last Week	Last Year	5 Yr. Ave.
2,535	2,584	2,280	2,187

Change this week: -49 Change for the same week last year: -117 Bcf

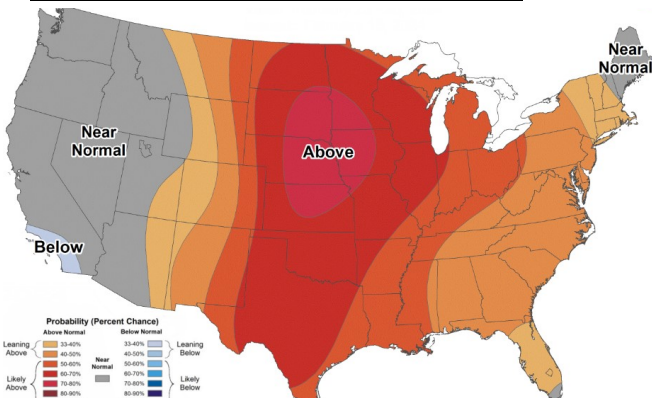
Inventory vs. 1 Year ago: +11.2% Inventory vs. 5-Yr. Ave: +15.9%

Working Gas in Storage Compared to 5-Year Range

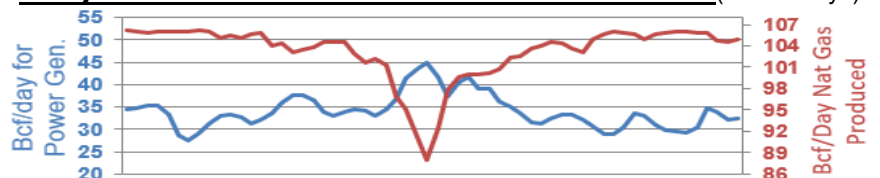


Temperature Forecast

February 23 through February 29, 2024



Daily Nat Gas Use For U.S. Power Production (last 60 days)



Last 52 week Average = 35.7 Bcf/day

Last 30 day Average = 33.5 Bcf/day

% of U.S. Demand = 41%

% of U.S. Demand = 31%

For more information on anything addressed in this report, please contact your Sales Manager.

Sources: NOAA, EIA, CME Group and Baker Hughes