



April 12, 2024

[www.enervantage.com](http://www.enervantage.com)

Phone: 502-963-8230

### Physical Spot Prices – April 11, 2024

	Price	Change	Natural Gas Equivalent
Natural Gas – H. Hub	\$1.764/MMBtu	+\$0.010	\$1.764
Propane – Mont Belvieu	\$0.8150/gal	-\$0.0395	\$8.91
Crude Oil – WTI Cush	\$86.21/bbl	+\$0.780	\$14.86
No.2 Heating Oil – NYH	\$93.77/bbl	-\$1.040	\$16.10
No.6 Resid. – G. Coast	\$71.38/bbl	-\$0.560	\$11.35
Cent App Coal (prev. day)	\$71.75/ton	+\$0.750	\$2.87

Change is from previous week

### U.S. Rotary Rig Count for:

	Gas	Oil
Week ending 04-05-24		
Current	110	508
Last Week	112	506
Last Year	158	590

Market Update is a weekly publication of EnerVantage and is designed to provide industrial and commercial customers with the latest "Market News" in the natural gas industry. The information contained herein is intended as general business information. This publication contains forward-looking material and is not intended for a specific business situation. If you would like copies of previous reports, please visit our website or contact your Sales Manager.

### Futures Pricing

At the close of business Thursday, April 11, 2024 the future strip prices were as follows:

	This Week 04/11/24	Last Week 04/04/24	Change	Last Month 03/11/24	Change	Last Year 04/11/23	Change
NYMEX near month	\$1.764	\$1.774	-\$0.010	\$1.862	-\$0.098	\$3.110	-\$1.346
NYMEX 12-month strip	\$2.790	\$2.760	+\$0.030	\$2.817	-\$0.027	\$3.780	-\$0.990
NYMEX Winter strip	\$3.397	\$3.338	+\$0.059	\$3.364	+\$0.033	\$4.304	-\$0.907
NYMEX Summer strip*	\$2.243	\$2.245	-\$0.002	\$2.330	-\$0.087	\$3.346	-\$1.103

Near month range for the week = \$1.943 - \$1.746

Current near month is May '24

12-month strip is May '24 – April '25

\*Summer strip is May '24 – Oct '24

Winter strip is Nov '24 – Mar '25

### Near-Month Natural Gas

#### Futures Prices (NYMEX) through April 11, 2024



### Storage Report

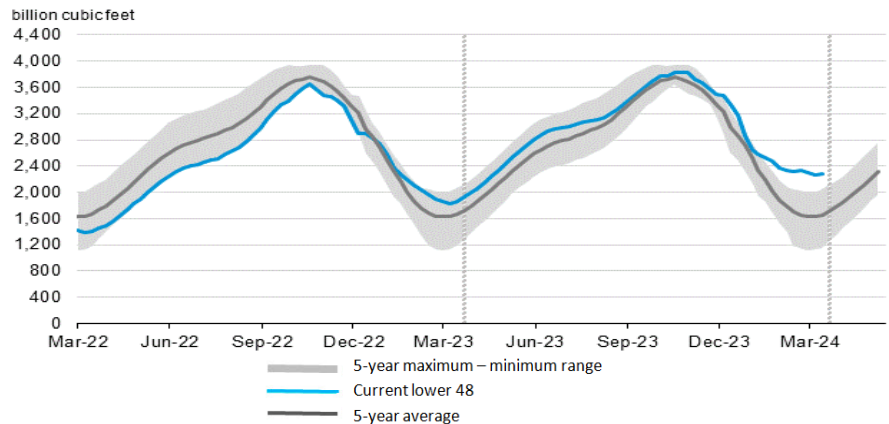
For the week ending April 05, 2024, natural gas storage reported by the Energy Information Administration (EIA) was (in Bcf):

This Week	Last Week	Last Year	5 Yr. Ave.
2,283	2,259	1,848	1,650

Change this week: +24 Bcf Change for the same week last year: +11 Bcf

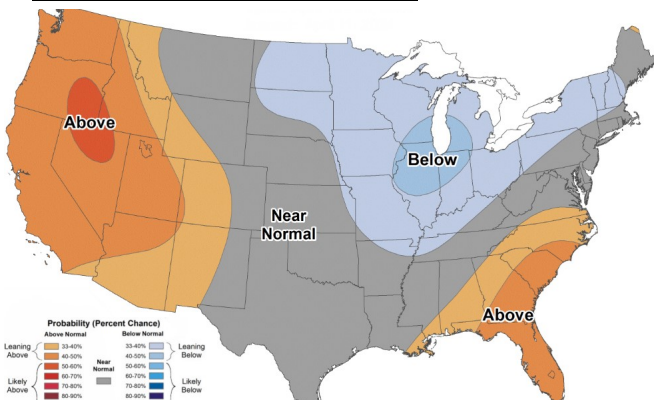
Inventory vs. 1 Year ago: +23.5% Inventory vs. 5-Yr. Ave: +38.4%

#### Working Gas in Storage Compared to 5-Year Range



### Temperature Forecast

#### April 19 through April 25, 2024



For more information on anything addressed in this report, please contact your Sales Manager.

Sources: NOAA, EIA, CME Group and Baker Hughes

### Daily Nat Gas Use For U.S. Power Production (last 60 days)

