



April 26, 2024

www.enervantage.com

Phone: 502-963-8230

Physical Spot Prices – April 25, 2024

	Price	Change	Natural Gas Equivalent
Natural Gas – H. Hub	\$1.638/MMBtu	-\$0.119	\$1.638
Propane – Mont Belvieu	\$0.8075/gal	-\$0.0032	\$8.82
Crude Oil – WTI Cush	\$84.21/bl	+\$1.520	\$14.52
No.2 Heating Oil – NYH	\$90.30/bl	+\$2.110	\$15.50
No.6 Resid. – G. Coast	\$74.33/bl	+\$2.210	\$11.82
Cent App Coal (prev. day)	\$71.25/ton	-\$0.500	\$2.85

Change is from previous week

U.S. Rotary Rig Count for:

	Gas	Oil
Week ending 04-19-24		
Current	106	511
Last Week	109	506
Last Year	159	591

Market Update is a weekly publication of EnerVantage and is designed to provide industrial and commercial customers with the latest "Market News" in the natural gas industry. The information contained herein is intended as general business information. This publication contains forward-looking material and is not intended for a specific business situation. If you would like copies of previous reports, please visit our website or contact your Sales Manager.

Futures Pricing

At the close of business Thursday, April 25, 2024 the future strip prices were as follows:

	This Week 04/25/24	Last Week 04/18/24	Change	Last Month 03/25/24	Change	Last Year 04/25/23	Change
NYMEX near month	\$1.638	\$1.757	-\$0.119	\$1.789	-\$0.151	\$3.217	-\$1.579
NYMEX 12-month strip	\$2.817	\$2.788	+\$0.029	\$2.767	+\$0.050	\$3.887	-\$1.070
NYMEX Winter strip	\$3.451	\$3.401	+\$0.050	\$3.342	+\$0.109	\$4.424	-\$0.973
NYMEX Summer strip*	\$2.246	\$2.237	+\$0.009	\$2.252	-\$0.006	\$3.449	-\$1.203

Near month range for the week = \$1.649 - \$1.802

Current near month is May '24

12-month strip is May '24 – April '25

*Summer strip is May '24 – Oct '24

Winter strip is Nov '24 – Mar '25

Near-Month Natural Gas

Futures Prices (NYMEX) through April 25, 2024



Storage Report

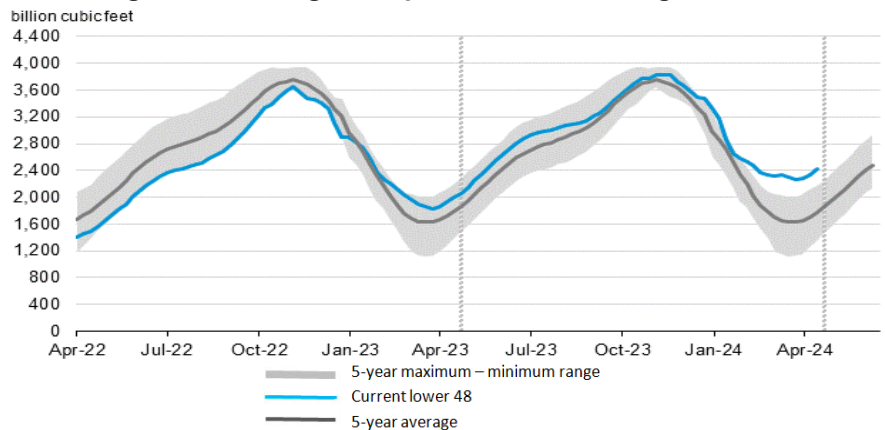
For the week ending April 19, 2024, natural gas storage reported by the Energy Information Administration (EIA) was (in Bcf):

This Week	Last Week	Last Year	5 Yr. Ave.
2,425	2,333	1,986	1,770

Change this week: +92 Bcf Change for the same week last year: +77 Bcf

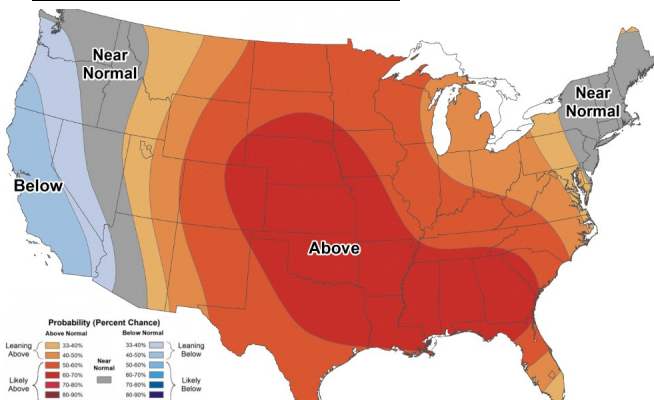
Inventory vs. 1 Year ago: +22.1% Inventory vs. 5-Yr. Ave: +37.0%

Working Gas in Storage Compared to 5-Year Range

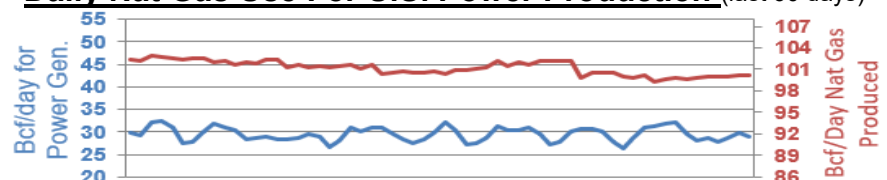


Temperature Forecast

May 03 through May 09, 2024



Daily Nat Gas Use For U.S. Power Production (last 60 days)



Last 52 week Average = 36.0 Bcf/day

Last 30 day Average = 29.5 Bcf/day

% of U.S. Demand = 41%

% of U.S. Demand = 36%

For more information on anything addressed in this report, please contact your Sales Manager.

Sources: NOAA, EIA, CME Group and Baker Hughes