



October 27, 2023

[www.enervantage.com](http://www.enervantage.com)

Phone: 502-963-8230

### Physical Spot Prices – October 26, 2023

	Price	Change	Natural Gas Equivalent
Natural Gas – H. Hub	\$3.214/MMBtu	+\$0.257	\$3.214
Propane – Mont Belvieu	\$0.6845/gal	-\$0.016	\$7.48
Crude Oil – WTI Cush	\$86.090/bl	-\$2.230	\$14.84
No.2 Heating Oil – NYH	\$114.26/bl	-\$4.570	\$19.61
No.6 Resid. – G. Coast	\$72.66/bl	-\$5.990	\$11.56
Cent App Coal (prev. day)	\$70.500/ton	\$0.000	\$2.82

Change is from previous week

### U.S. Rotary Rig Count for:

	Gas	Oil
Week ending 10-20-23		
Current	118	502
Last Week	117	501
Last Year	157	612

Market Update is a weekly publication of Encore Energy Services, Inc. and is designed to provide industrial and commercial customers with the latest "Market News" in the natural gas industry. The information contained herein is intended as general business information. This publication contains forward-looking material and is not intended for a specific business situation. If you would like copies of previous reports, please visit our website or contact your Sales Manager.

### Futures Pricing

At the close of business Thursday, October 26, 2023 the future strip prices were as follows:

	This Week 10/26/23	Last Week 10/19/23	Change	Last Month 09/26/23	Change	Last Year 10/26/22	Change
NYMEX near month	\$3.214	\$2.957	+\$0.257	\$2.845	+\$0.369	\$5.288	-\$2.074
NYMEX 12-month strip	\$3.377	\$3.289	+\$0.088	\$3.194	+\$0.183	\$4.741	-\$1.364
NYMEX Winter strip	\$3.476	\$3.326	+\$0.150	\$3.247	+\$0.229	\$5.401	-\$1.925
NYMEX Summer strip	\$3.306	\$3.262	+\$0.044	\$3.156	+\$0.150	\$4.268	-\$0.962

Near month range for the week = \$2.861 - \$3.279

Current near month is November '23

12-month strip is November '23 – October '24

Summer strip is Apr '24 – Oct '24

Winter strip is Nov '23 – Mar '24

### Near-Month Natural Gas

#### Futures Prices (NYMEX) through Oct 26, 2023

\$/MMBtu



### Storage Report

For the week ending October 20, 2023, natural gas storage reported by the Energy Information Administration (EIA) was (in Bcf):

This Week	Last Week	Last Year	5 Yr. Ave.
3,700	3,626	3,387	3,517

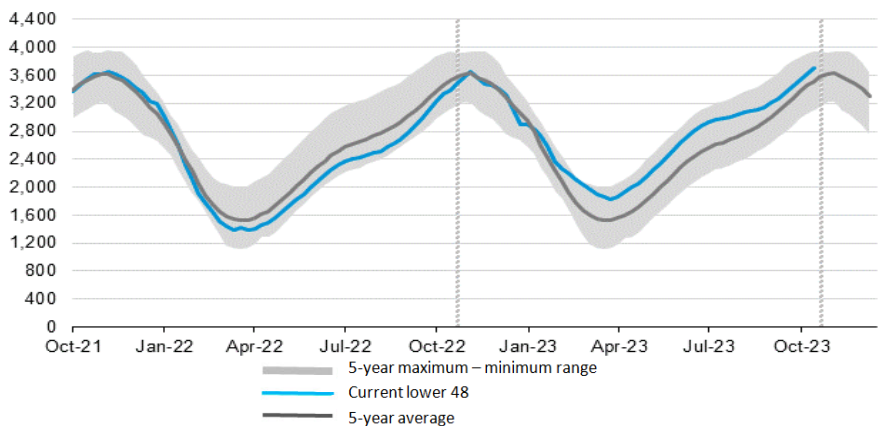
Change this week: +74 Bcf

Change for the same week last year: +61 Bcf

Inventory vs. 1 Year ago: +9.2%

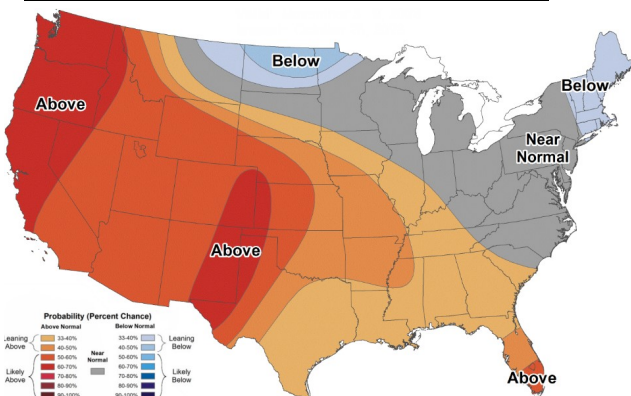
Inventory vs. 5-Yr. Ave: +5.2%

#### Working Gas in Storage Compared to 5-Year Range



### Temperature Forecast

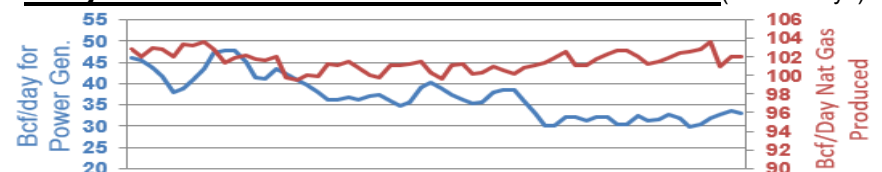
#### November 03 through November 09, 2023



For more information on anything addressed in this report, please contact your Sales Manager.

Sources: NOAA, EIA, CME Group and Baker Hughes

### Daily Nat Gas Use For U.S. Power Production (last 60 days)



Last 52 week Average = 34.9 Bcf/day

Last 30 day Average = 33.3 Bcf/day

% of U.S. Demand = 40%

% of U.S. Demand = 44%