



March 20, 2026

[www.enervantage.com](http://www.enervantage.com)

Phone: 502-963-8230

### Physical Spot Prices – March 19, 2026

	Price	Change	Natural Gas Equivalent
Natural Gas – H. Hub	\$3.166/MMBtu	-\$0.067	\$3.166
Propane – Mont Belvieu	\$0.7803/gal	+\$0.0178	\$8.53
Crude Oil – WTI Cush	\$92.32/bl	+\$5.070	\$15.92
No.2 Heating Oil – NYH	\$156.15/bl	+\$24.740	\$26.81
No.6 Resid. – G. Coast	\$92.31/bl	+\$9.740	\$14.68
Cent App Coal (prev. day)	\$85.50/ton	+\$0.000	\$3.42

**Change is from previous week**

### U.S. Rotary Rig Count for:

	Gas	Oil
Week ending 03-13-26		
Current	133	412
Last Week	132	411
Last Year	100	487

Market Update is a weekly publication of EnerVantage and is designed to provide industrial and commercial customers with the latest "Market News" in the natural gas industry. The information contained herein is intended as general business information. This publication contains forward-looking material and is not intended for a specific business situation. If you would like copies of previous reports, please visit our website or contact your Sales Manager.

### Futures Pricing

At the close of business Thursday, March 19, 2026 the future strip prices were as follows:

	This Week 03/19/26	Last Week 03/12/26	Change	Last Month 02/19/26	Change	Last Year 03/19/25	Change
NYMEX near month	\$3.166	\$3.233	-\$0.067	\$2.946	+\$0.220	\$4.058	-\$0.892
NYMEX 12-month strip	\$3.866	\$3.898	-\$0.032	\$3.638	+\$0.228	\$4.341	-\$0.475
NYMEX Winter strip	\$4.526	\$4.464	+\$0.062	\$4.141	+\$0.385	\$4.554	-\$0.028
NYMEX Summer strip	\$3.395	\$3.493	-\$0.098	\$3.279	+\$0.116	\$4.189	-\$0.794

Near month range for the week = \$2.923 - \$3.317

Current near month is April '26

12-month strip is April '26 – March '27

Summer strip is April '26 – Oct '26

Winter strip is Nov '26 – Mar '27

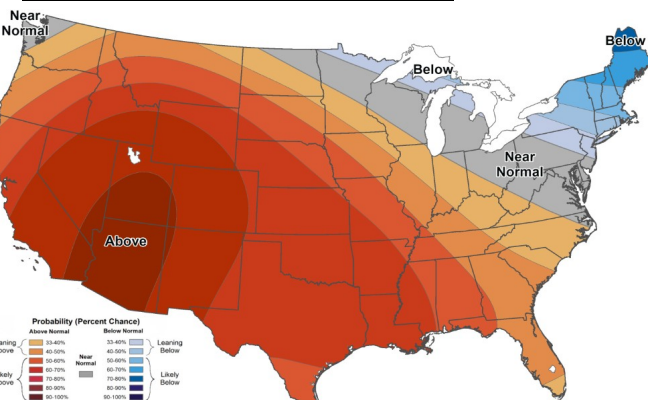
### Near-Month Natural Gas

#### Futures Prices (NYMEX) through Mar 19, 2026



### Temperature Forecast

#### Mar 27, 2026 through Apr 02, 2026



For more information on anything addressed in this report, please contact your Sales Manager.

Sources: NOAA, EIA, CME Group and Baker Hughes

### Storage Report

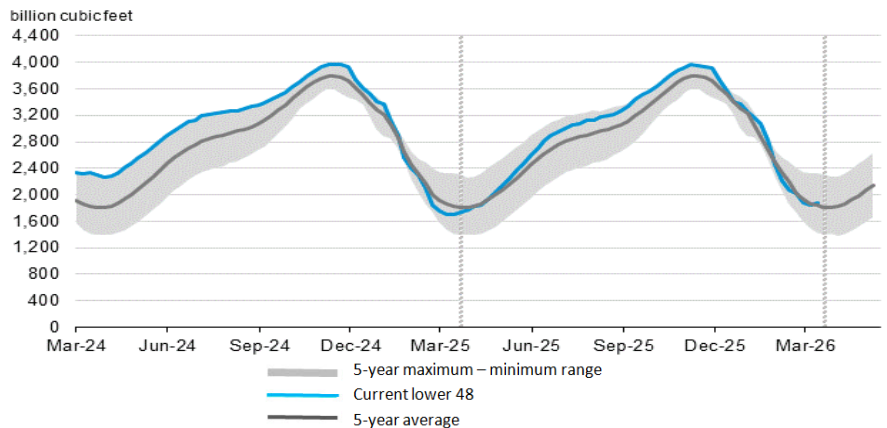
For the week ending Mar 13, 2026, natural gas storage reported by the Energy Information Administration (EIA) was as follows:

This Week	Last Week	Last Year	5 Yr. Ave.
1,883	1,848	1,706	1,836

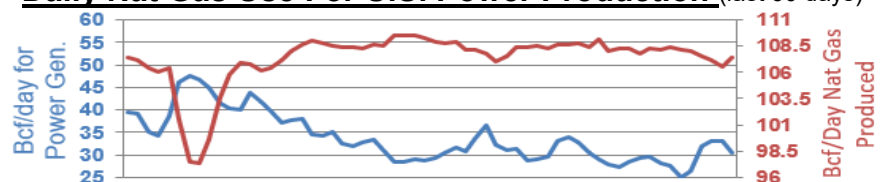
Change this week: +35 Bcf Change for the same week last year: +1 Bcf

Inventory vs. 1 Year ago: +10.4% Inventory vs. 5-Yr. Ave: +2.6%

### Working Gas in Storage Compared to 5-Year Range



### Daily Nat Gas Use For U.S. Power Production (last 60 days)



Last 52 week Average = 35.9 Bcf/day

Last 30 day Average = 30.4 Bcf/day

% of U.S. Demand = 40%

% of U.S. Demand = 32%