



May 01, 2026

www.enervantage.com

Phone: 502-963-8230

Physical Spot Prices – April 30, 2026

	Price	Change	Natural Gas Equivalent
Natural Gas – H. Hub	\$2.767/MMBtu	+\$0.007	\$2.767
Propane – Mont Belvieu	\$0.8140/gal	+\$0.0024	\$8.90
Crude Oil – WTI Cush	\$106.88/bl	+\$9.420	\$18.43
No.2 Heating Oil – NYH	\$155.87/bl	+\$10.190	\$26.76
No.6 Resid. – G. Coast	\$96.19/bl	+\$13.230	\$15.30
Cent App Coal (prev. day)	\$85.50/ton	\$0.000	\$3.42

Change is from previous week

U.S. Rotary Rig Count for:

Week ending 04-24-26

	Gas	Oil
Current	129	407
Last Week	125	410
Last Year	107	475

Market Update is a weekly publication of EnerVantage and is designed to provide industrial and commercial customers with the latest "Market News" in the natural gas industry. The information contained herein is intended as general business information. This publication contains forward-looking material and is not intended for a specific business situation. If you would like copies of previous reports, please visit our website or contact your Sales Manager.

Futures Pricing

At the close of business Thursday, April 30, 2026 the future strip prices were as follows:

	This Week 04/30/26	Last Week 04/23/26	Change	Last Month 03/30/26	Change	Last Year 04/30/25	Change
NYMEX near month	\$2.767	\$2.760	+\$0.007	\$3.035	-\$0.268	\$3.948	-\$1.181
NYMEX 12-month strip	\$3.420	\$3.440	-\$0.020	\$3.718	-\$0.298	\$4.086	-\$0.666
NYMEX Winter strip	\$3.967	\$3.994	-\$0.027	\$4.325	-\$0.358	\$4.389	-\$0.422
NYMEX Summer strip	\$3.240	\$3.275	-\$0.035	\$3.486	-\$0.246	\$3.522	-\$0.282

Near month range for the week = \$2.483 - \$2.794

Current near month is June '26

Summer strip is April '27 – Oct '27

12-month strip is June '26 – May '27

Winter strip is Nov '26 – Mar '27

Near-Month Natural Gas

Futures Prices (NYMEX) through Apr 30, 2026



Storage Report

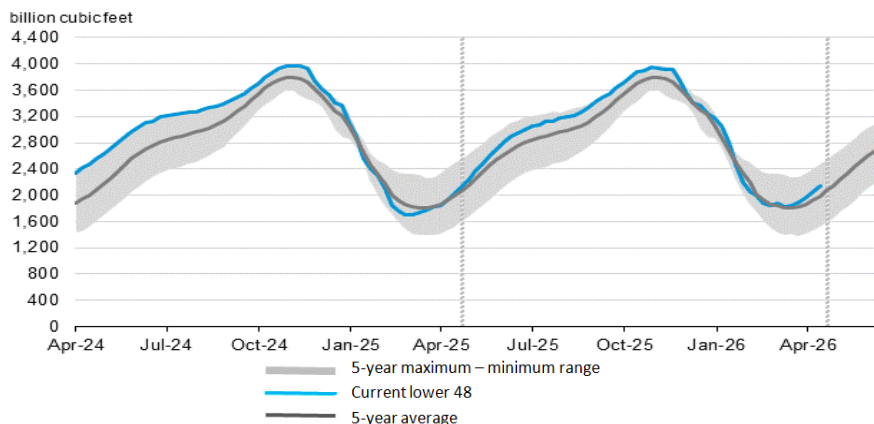
For the week ending Apr 24, 2026, natural gas storage reported by the Energy Information Administration (EIA) was as follows:

This Week	Last Week	Last Year	5 Yr. Ave.
2,142	2,063	1,921	1,926

Change this week: +79 Bcf Change for the same week last year: +105 Bcf

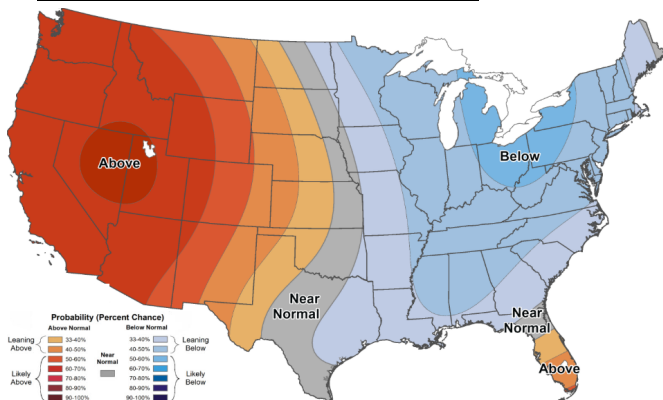
Inventory vs. 1 Year ago: +5.7% Inventory vs. 5-Yr. Ave: +7.7%

Working Gas in Storage Compared to 5-Year Range



Temperature Forecast

May 08, 2026 through May 14, 2026



For more information on anything addressed in this report, please contact your Sales Manager.

Sources: NOAA, EIA, CME Group and Baker Hughes

Daily Nat Gas Use For U.S. Power Production (last 60 days)

