



May 31, 2024

[www.enervantage.com](http://www.enervantage.com)

Phone: 502-963-8230

### Physical Spot Prices – May 30, 2024

	Price	Change	Natural Gas Equivalent
Natural Gas – H. Hub	\$2.572/MMBtu	-\$0.351	\$2.572
Propane – Mont Belvieu	\$0.7052/gal	+\$0.0010	\$7.71
Crude Oil – WTI Cush	\$79.23/bl	+\$1.110	\$13.66
No.2 Heating Oil – NYH	\$84.925/bl	+\$0.215	\$14.58
No.6 Resid. – G. Coast	\$73.78/bl	+\$3.480	\$11.73
Cent App Coal (prev. day)	\$71.75/ton	+\$0.250	\$2.87

Change is from previous week

### U.S. Rotary Rig Count for:

	Gas	Oil
Week ending 05-24-24		
Current	99	497
Last Week	103	497
Last Year	137	570

Market Update is a weekly publication of EnerVantage and is designed to provide industrial and commercial customers with the latest "Market News" in the natural gas industry. The information contained herein is intended as general business information. This publication contains forward-looking material and is not intended for a specific business situation. If you would like copies of previous reports, please visit our website or contact your Sales Manager.

### Futures Pricing

At the close of business Thursday, May 30, 2024 the future strip prices were as follows:

	This Week 05/30/24	Last Week 05/23/24	Change	Last Month 04/30/24	Change	Last Year 05/30/23	Change
NYMEX near month	\$2.572	\$2.923	-\$0.351	\$2.319	+\$0.253	\$3.329	-\$0.757
NYMEX 12-month strip	\$3.085	\$3.291	-\$0.206	\$3.029	+\$0.056	\$3.803	-\$0.718
NYMEX Winter strip	\$3.444	\$3.617	-\$0.173	\$3.433	+\$0.011	\$4.238	-\$0.794
NYMEX Summer strip*	\$2.643	\$2.953	-\$0.310	\$2.445	+\$0.198	\$3.366	-\$0.723

Near month range for the week = \$2.417 - \$2.709

Current near month is July '24

12-month strip is July '24 – June '25

\*Summer strip is Jul '24 – Oct '24

Winter strip is Nov '24 – Mar '25

### Near-Month Natural Gas Futures Prices (NYMEX) through May 30, 2024



### Storage Report

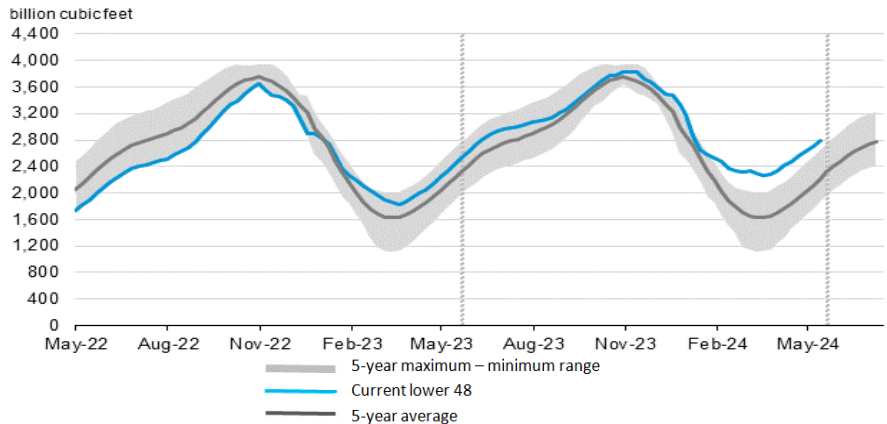
For the week ending May 24, 2024, natural gas storage reported by the Energy Information Administration (EIA) was (in Bcf):

This Week	Last Week	Last Year	5 Yr. Ave.
2,795	2,711	2,415	2,209

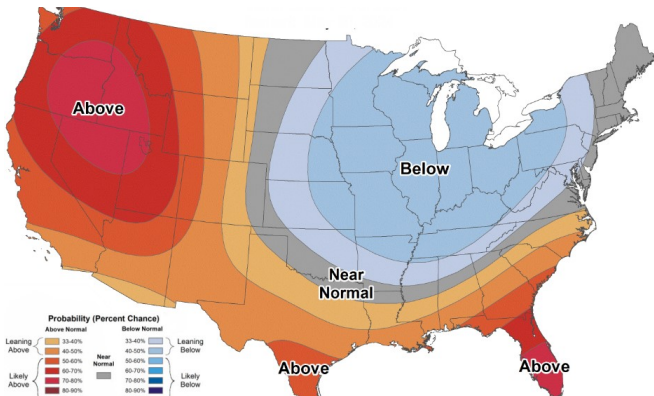
Change this week: +84 Bcf Change for the same week last year: +106 Bcf

Inventory vs. 1 Year ago: +15.7% Inventory vs. 5-Yr. Ave: +26.5%

### Working Gas in Storage Compared to 5-Year Range



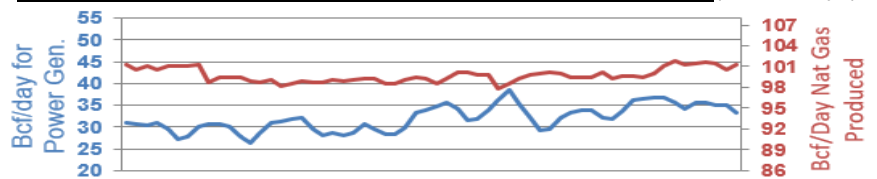
### Temperature Forecast June 7 through June 13, 2024



For more information on anything addressed in this report, please contact your Sales Manager.

Sources: NOAA, EIA, CME Group and Baker Hughes

### Daily Nat Gas Use For U.S. Power Production (last 60 days)



Last 52 week Average = 36.2 Bcf/day

Last 30 day Average = 34.1 Bcf/day

% of U.S. Demand = 41%

% of U.S. Demand = 46%