



October 11, 2024

www.enervantage.com

Phone: 502-963-8230

Physical Spot Prices – October 10, 2024

	Price	Change	Natural Gas Equivalent
Natural Gas – H. Hub	\$2.675/MMBtu	-\$0.295	\$2.675
Propane – Mont Belvieu	\$0.7302/gal	-\$0.0532	\$7.98
Crude Oil – WTI Cush	\$73.24/bbl	+\$3.140	\$12.63
No.2 Heating Oil – NYH	\$73.58/bbl	+\$3.980	\$12.63
No.6 Resid. – G. Coast	\$71.99/bbl	+\$4.270	\$11.45
Cent App Coal (prev. day)	\$73.50/ton	\$0.000	\$2.94

Change is from previous week

U.S. Rotary Rig Count for:

	Gas	Oil
Week ending 10-04-24		
Current	102	479
Last Week	99	484
Last Year	118	497

Market Update is a weekly publication of EnerVantage and is designed to provide industrial and commercial customers with the latest "Market News" in the natural gas industry. The information contained herein is intended as general business information. This publication contains forward-looking material and is not intended for a specific business situation. If you would like copies of previous reports, please visit our website or contact your Sales Manager.

Futures Pricing

At the close of business Thursday, October 10, 2024 the future strip prices were as follows:

	This Week 10/10/24	Last Week 10/03/24	Change	Last Month 09/10/24	Change	Last Year 10/10/23	Change
NYMEX near month	\$2.675	\$2.970	-\$0.295	\$2.545	+\$0.130	\$3.903	-\$1.228
NYMEX 12-month strip	\$3.121	\$3.300	-\$0.179	\$3.024	+\$0.097	\$4.002	-\$0.881
NYMEX Winter strip	\$3.077	\$3.335	-\$0.258	\$3.004	+\$0.073	\$4.258	-\$1.181
NYMEX Summer strip*	\$3.152	\$3.275	-\$0.123	\$3.039	+\$0.113	\$3.819	-\$0.667

Near month range for the week = \$2.588 - \$3.019

Current near month is November '24

*Summer strip is April '25 – Oct '25

12-month strip is November '24 – October '25

Winter strip is Nov '24 – Mar '25

Near-Month Natural Gas

Futures Prices (NYMEX) through Oct 10, 2024



Storage Report

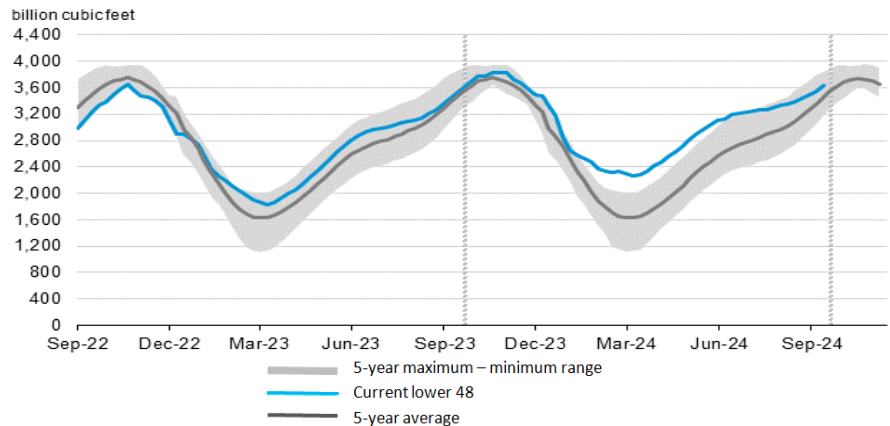
For the week ending October 04, 2024, natural gas storage reported by the Energy Information Administration (EIA) was (in Bcf):

This Week	Last Week	Last Year	5 Yr. Ave.
3,629	3,547	3,505	3,453

Change this week: +82 Bcf Change for the same week last year: +85 Bcf

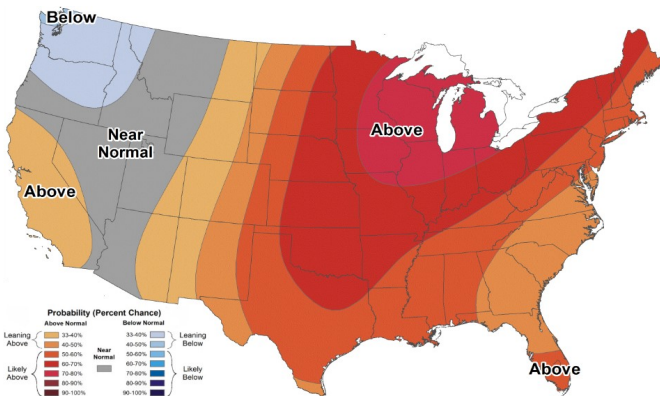
Inventory vs. 1 Year ago: +3.5% Inventory vs. 5-Yr. Ave: +5.1%

Working Gas in Storage Compared to 5-Year Range

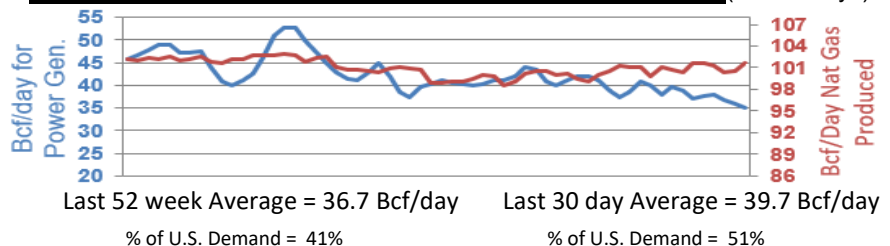


Temperature Forecast

October 18 through October 24, 2024



Daily Nat Gas Use For U.S. Power Production (last 60 days)



For more information on anything addressed in this report, please contact your Sales Manager.

Sources: NOAA, EIA, CME Group and Baker Hughes