



December 13, 2024

www.enervantage.com

Phone: 502-963-8230

Physical Spot Prices – December 12, 2024

	Price	Change	Natural Gas Equivalent
Natural Gas – H. Hub	\$3.455/MMBtu	+\$0.376	\$3.455
Propane – Mont Belvieu	\$0.7789/gal	+\$0.0040	\$8.51
Crude Oil – WTI Cush	\$70.29/bbl	+\$1.750	\$12.12
No.2 Heating Oil – NYH	\$70.38/bbl	+\$2.345	\$12.08
No.6 Resid. – G. Coast	\$66.63/bbl	+\$2.420	\$10.60
Cent App Coal (prev. day)	\$75.50/ton	-\$0.750	\$3.02

Change is from previous week

U.S. Rotary Rig Count for:

	Gas	Oil
Week ending 12-06-24		
Current	102	482
Last Week	100	477
Last Year	119	503

Market Update is a weekly publication of EnerVantage and is designed to provide industrial and commercial customers with the latest "Market News" in the natural gas industry. The information contained herein is intended as general business information. This publication contains forward-looking material and is not intended for a specific business situation. If you would like copies of previous reports, please visit our website or contact your Sales Manager.

Futures Pricing

At the close of business Thursday, December 12, 2024 the future strip prices were as follows:

	This Week 12/12/24	Last Week 12/05/24	Change	Last Month 11/12/24	Change	Last Year 12/12/23	Change
NYMEX near month	\$3.455	\$3.079	+\$0.376	\$3.133	+\$0.322	\$3.590	-\$0.135
NYMEX 12-month strip	\$3.299	\$3.178	+\$0.122	\$3.137	+\$0.162	\$3.328	-\$0.029
NYMEX Winter strip	\$4.058	\$3.993	+\$0.065	\$3.805	+\$0.253	\$3.892	+\$0.166
NYMEX Summer strip	\$3.177	\$3.092	+\$0.085	\$3.041	+\$0.136	\$3.151	+\$0.026

Near month range for the week = \$3.004 - \$3.559

Current near month is January '25

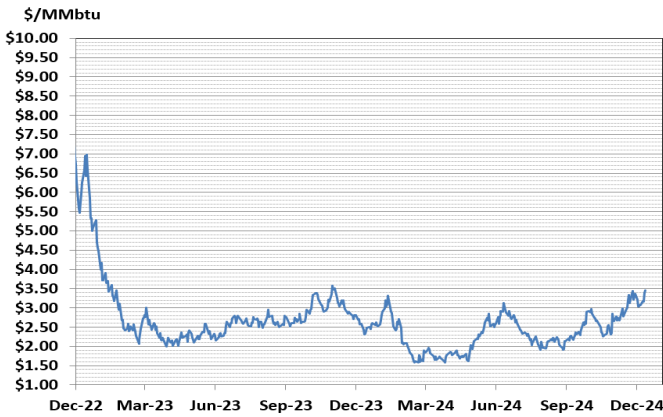
12-month strip is January '25 – December '25

Summer strip is April '25 – Oct '25

Winter strip is Dec '25 – Mar '26

Near-Month Natural Gas

Futures Prices (NYMEX) through Dec 12, 2024



Storage Report

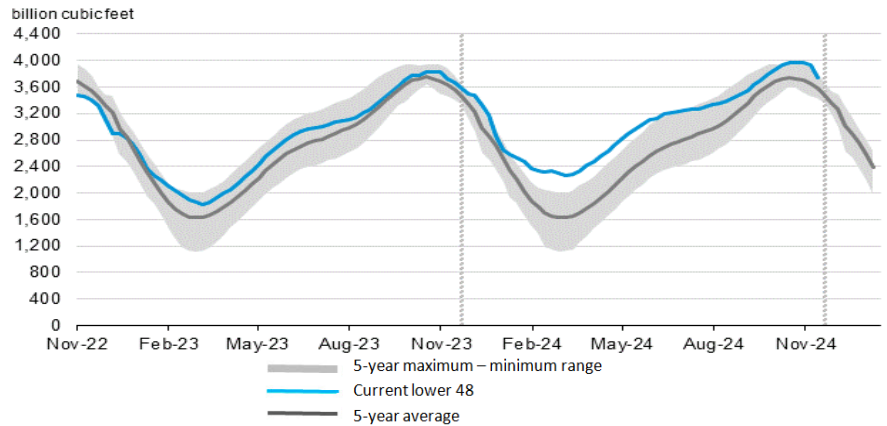
For the week ending December 06, 2024, natural gas storage reported by the Energy Information Administration (EIA) was (in Bcf):

This Week	Last Week	Last Year	5 Yr. Ave.
3,747	3,937	3,680	3,582

Change this week: -190 Bcf Change for the same week last year: -72 Bcf

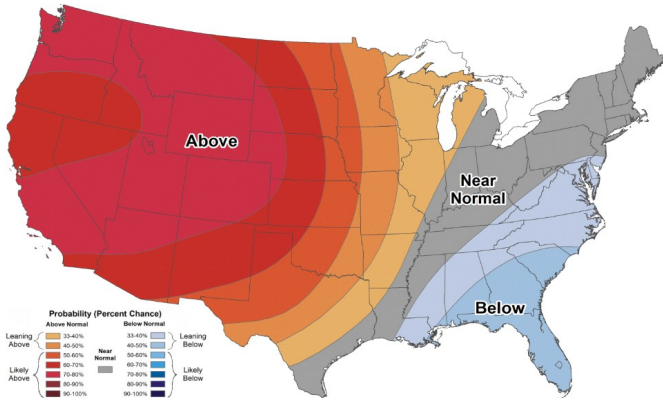
Inventory vs. 1 Year ago: +1.8% Inventory vs. 5-Yr. Ave: +4.6%

Working Gas in Storage Compared to 5-Year Range



Temperature Forecast

December 20 through December 26, 2024



For more information on anything addressed in this report, please contact your Sales Manager.

Sources: NOAA, EIA, CME Group and Baker Hughes

Daily Nat Gas Use For U.S. Power Production (last 60 days)

